

[db]netsoft
TIMING DATA GRAPHICS

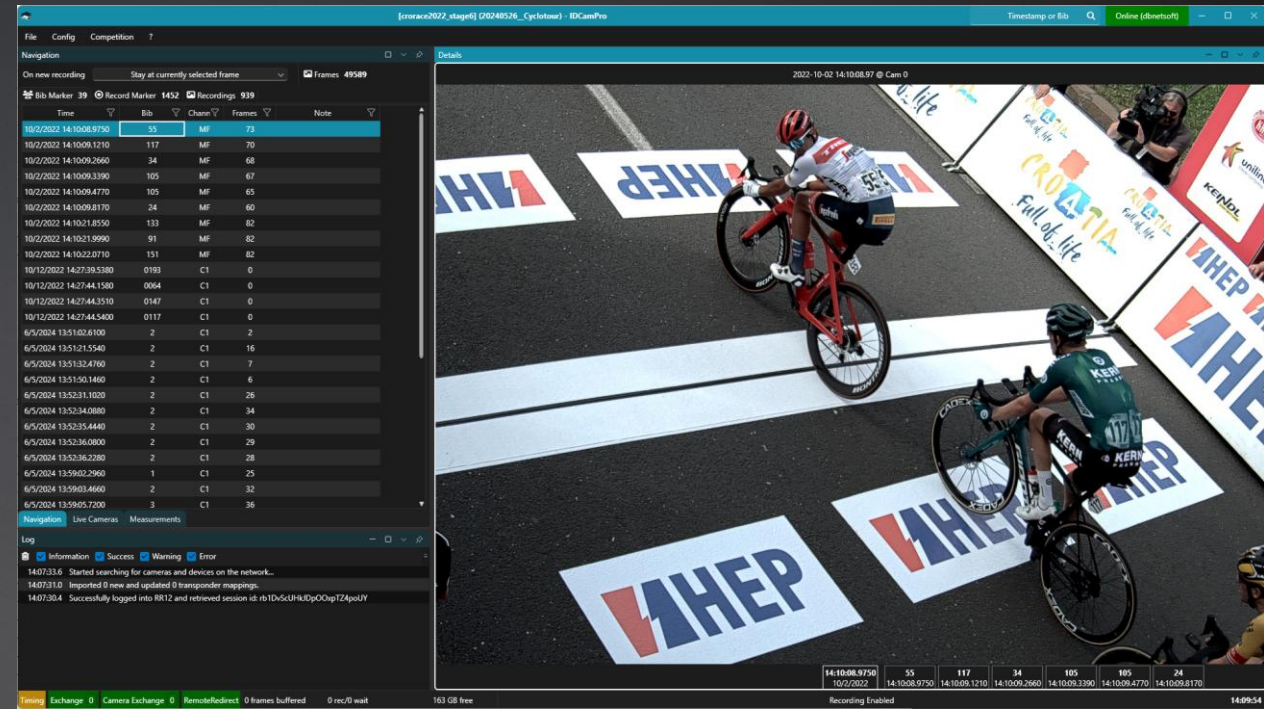
About

- Single person company: Tobias Däuber
- Three fields of play
 - Selling turn-key software
 - IDCamPro, RRExchange, ScreensPro, Photofinish.NET, ...
 - Programming custom software
 - For Federations or organizers or timekeepers
 - Providing results services on-site
 - Timing (Traditional, Photofinish, Tracking, Transponder, ...)
 - Data (Reports, Management, Online Live Results, CIS, ...)
 - TV Graphics (Fully animated in 3D, broadcast-quality, ...)
- Working in close cooperation with the best freelancers and timing & scoring companies
- Successful the business since more than 25 years

IDCamPro

Finish-line image recording and backup time retrieval

- Records images of the finish line augmented with timestamps from timing devices
- Easily recover missed reads
- Overview of passings and impulses – both visually and in list form
- Quickly jump to passings, crossings and timestamps
- Export images with batch job
- Export of missed reads directly to RR12 or evaluation software



Supported timing systems

- ALGE-Timing
- RACE RESULT
- Tag Heuer
- Microgate

Supported cameras/sources

- Axis IP cameras
- Hikvision
- NDI

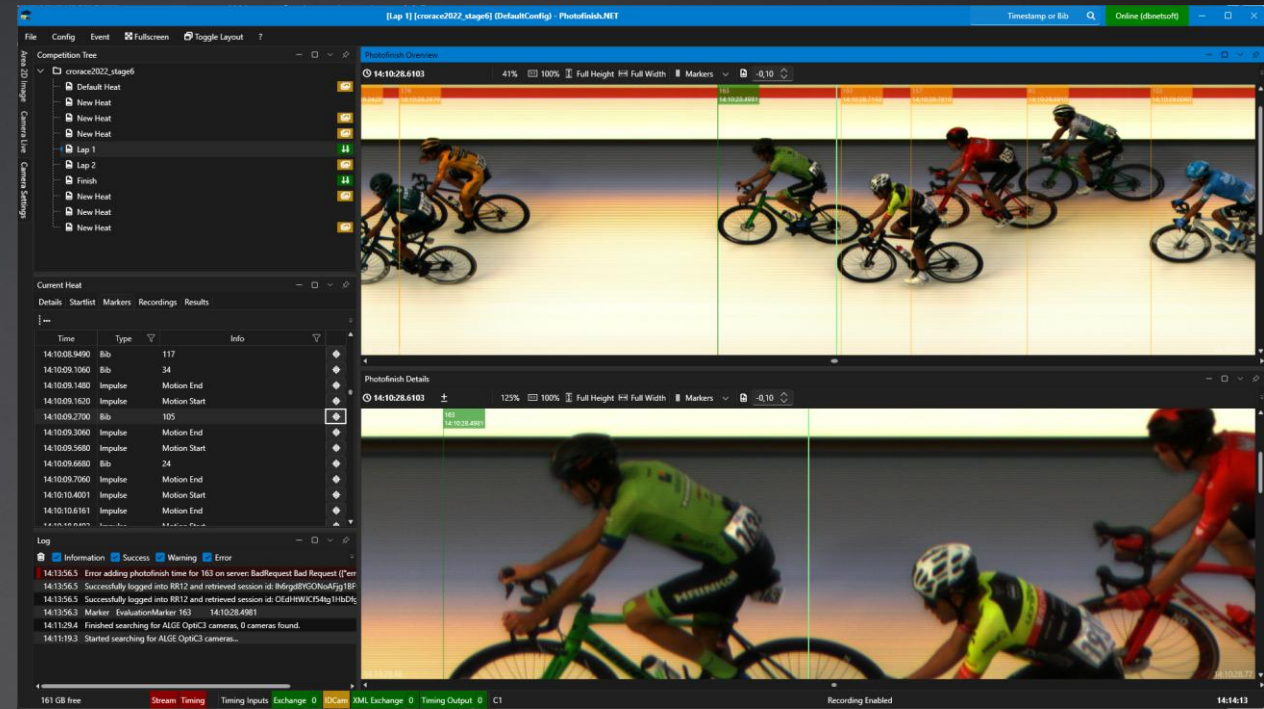
License

- Yearly price
- Activated over internet per computer
- EUR 600,- per year

Photofinish.NET

Advanced photo-finish software for OptiC3

- Powerful replacement for OptiC3.NET software
- Avoiding of wrong evaluations
 - Indication on how far transponder passing is away
 - Number of evaluation to avoid a second evaluation
- Quickly jump to markers and timestamps
- Shows a list of nearby passings for evaluation
- Shows jerseys and colors for easier evaluation
- Integrates with IDCamPro for front/back images



Supported timing systems

- ALGE-Timing
- RACE RESULT
- Tag Heuer
- Microgate

Imports/Exports

- RACE RESULT 12 integration
- FINISHLYNX export
- ALGE XML export

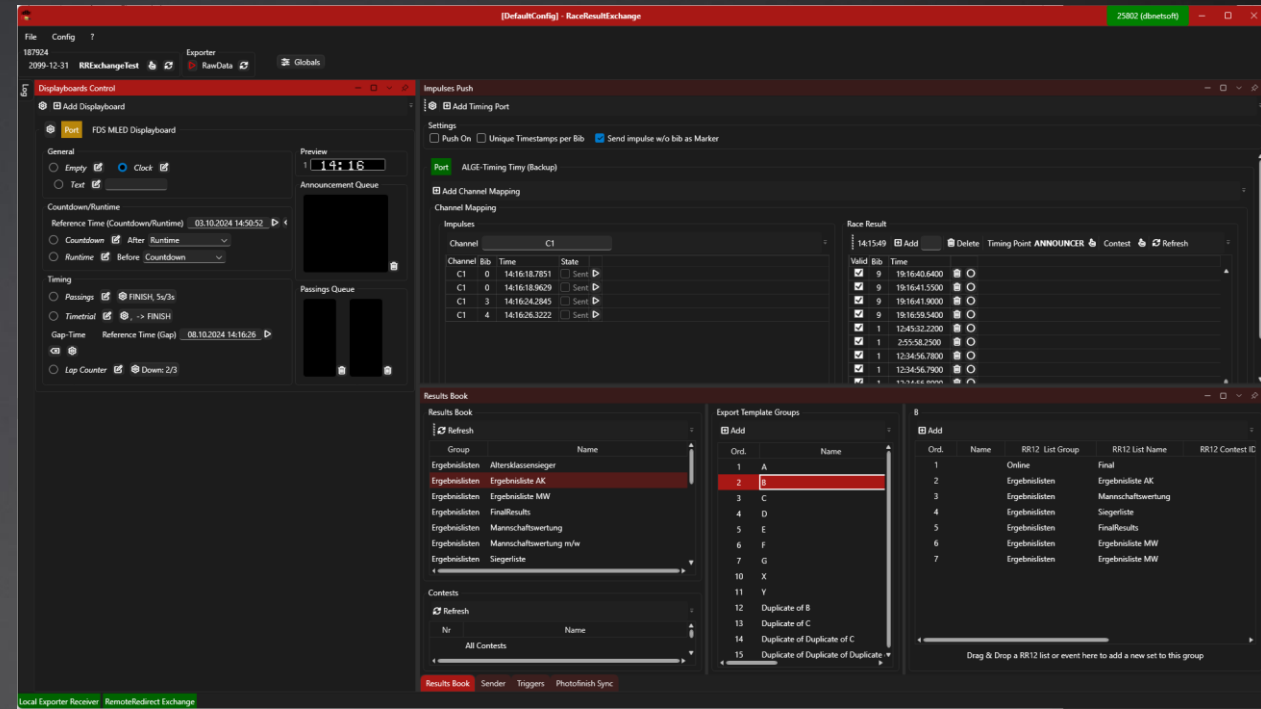
License

- Yearly price
- Activated over internet per computer
- EUR 600,- per year

RaceResultExchange

Swiss army knife for RR12

- Adds missing features to RR12
- Driving of display boards with start times and passings from RR12 for time trial or clocks
- Using timing devices with pushbuttons for backup markers
- Compile multiple output lists to one PDF
- Sync photo-finish results in real-time with RR12 measurement point



Modules

- Display boards
- Impulses/Backup
- Results Book
- Triggers
- Sender
- Photofinish Sync

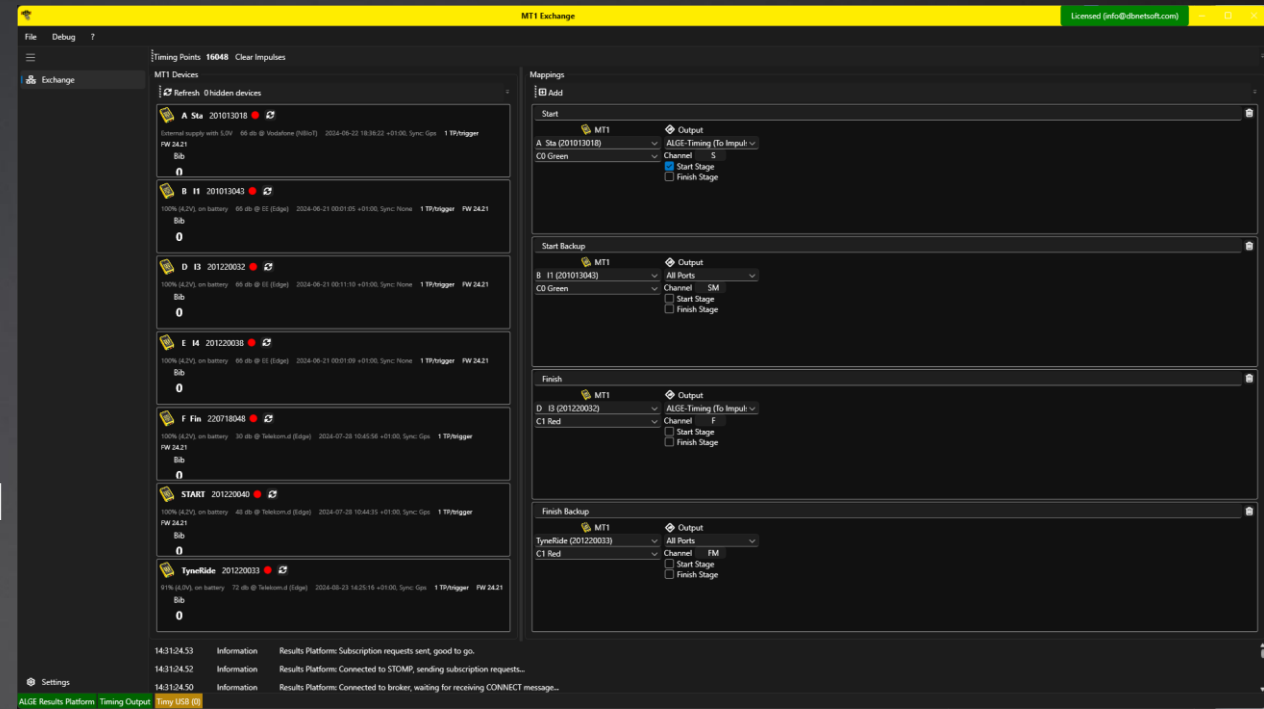
License

- Licensed onto RR12 account
- EUR 600,- per year

MT1 Exchange

Use MT1 over the internet with traditional software

- Status of all MT1 in the user account
- Mapping of inputs on specific MT1 device to output as a specific channel
- Export impulses with bib and channel to evaluation software as ALGE or Tag Heuer protocol
- No need to interact with ALGE Results
- MT1 do not need to be linked to an event



Output protocols

- ALGE-Timing
- Tag Heuer
- Timy USB for start/-finish times

Status overview

- Connected network
- Timing points
- Reception

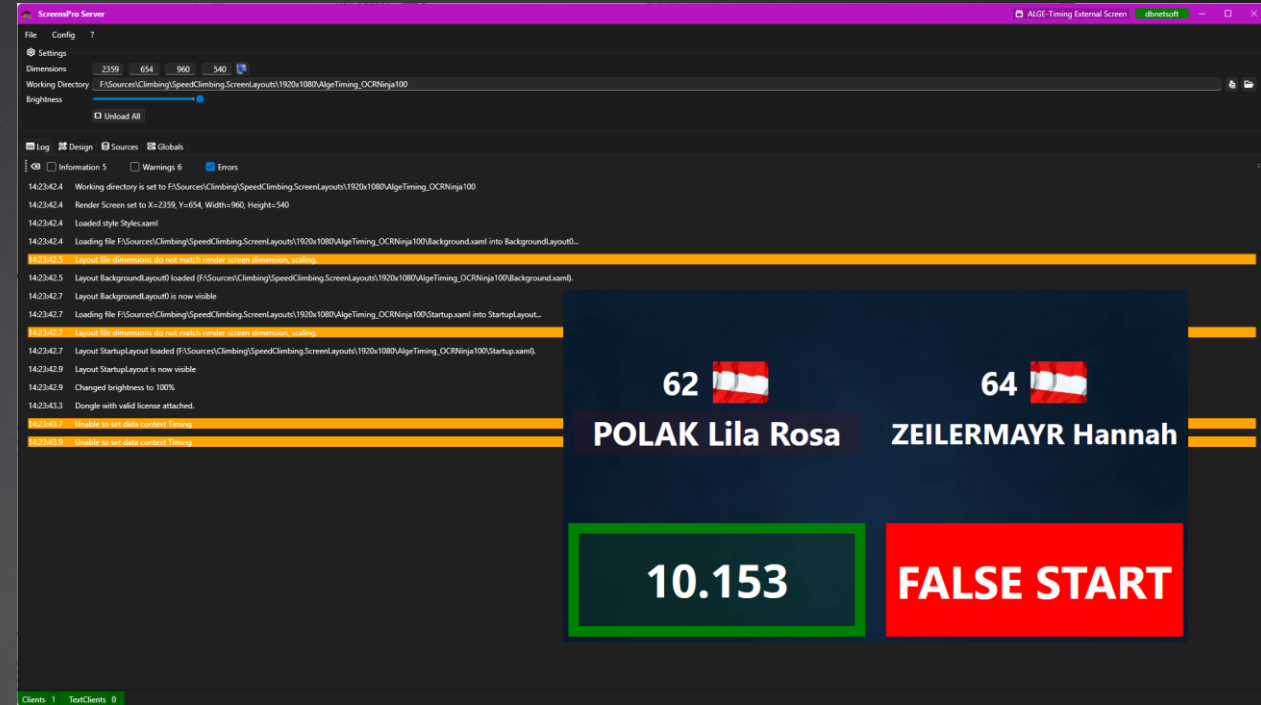
License

- Tied onto ALGE Results user account
- Yearly price
- EUR 150,- per year

ScreensPro

Versatile render software for any output screen or device

- Generic software for rendering content
- Integration with timing software
- Multiple running clocks and lists
- Advertisement and logos



Included software

- Server (render out)
- Client (control)
- Designer (design)

Output formats

- Window (HDMI)
- ND
- SDI (Blackmagic Design)

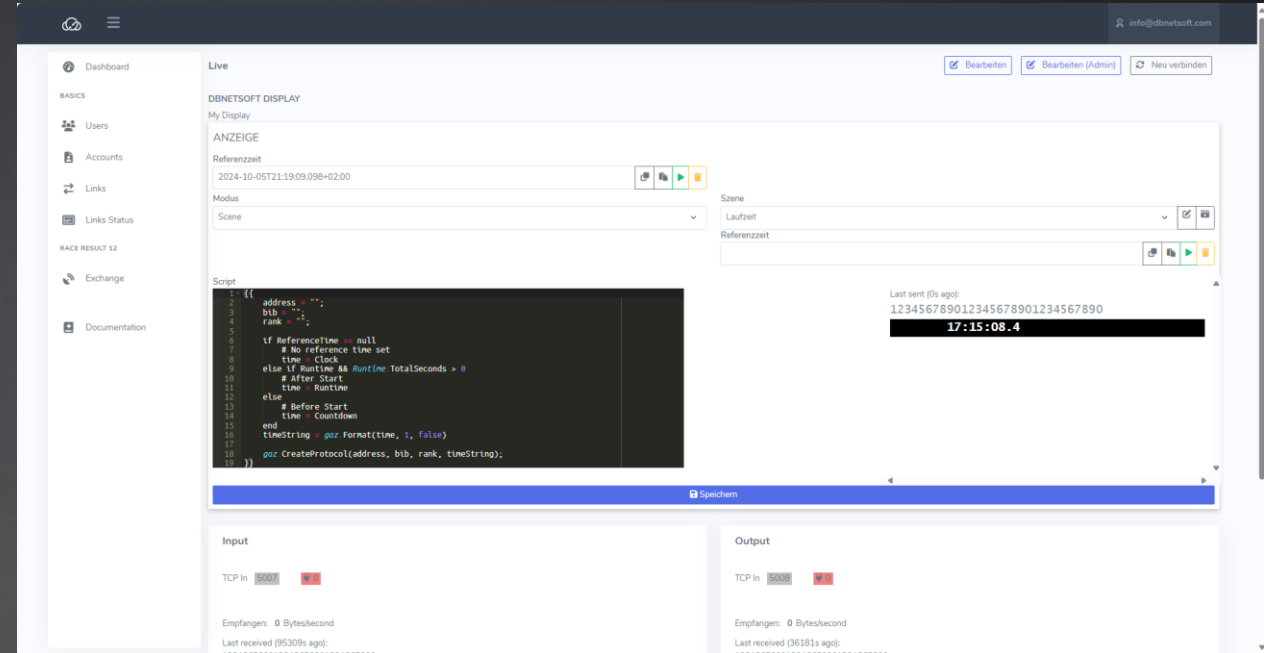
License

- Yearly price
- Activated over internet per computer
- EUR 600,- per year

RemoteDisplay

Drive remote display boards with centralized control

- Drive displayboards anywhere without the need to roll cables
- Connect a wireless router or Android Phone with RS232-USB-Adapter
- Centrally manage and control each display board
- Many scenes can be scripted e.g. one for clock, one for a runtime with specific start time, countdown to a start time, ...



Features per link

- Exchange timing data
- Exchange display data

Scripting

- Clock
- Runtime
- Countdown
- Texts

License

- Yearly price
- EUR 300,- for 1 link
- EUR 700,- for 3 links

[db]netsoft
TIMING DATA GRAPHICS
DI (FH) Tobias Däuber

www.dbnetsoft.com
info@dbnetsoft.com